

LEASEHOLD



House - Terraced (EPC Rating: D)

37 BOOKERHILL ROAD, HIGH WYCOMBE,
BUCKINGHAMSHIRE, HP12 4EY

£199,950

**Rye
View**
HOMES



1 Bedroom House - Terraced located in High Wycombe

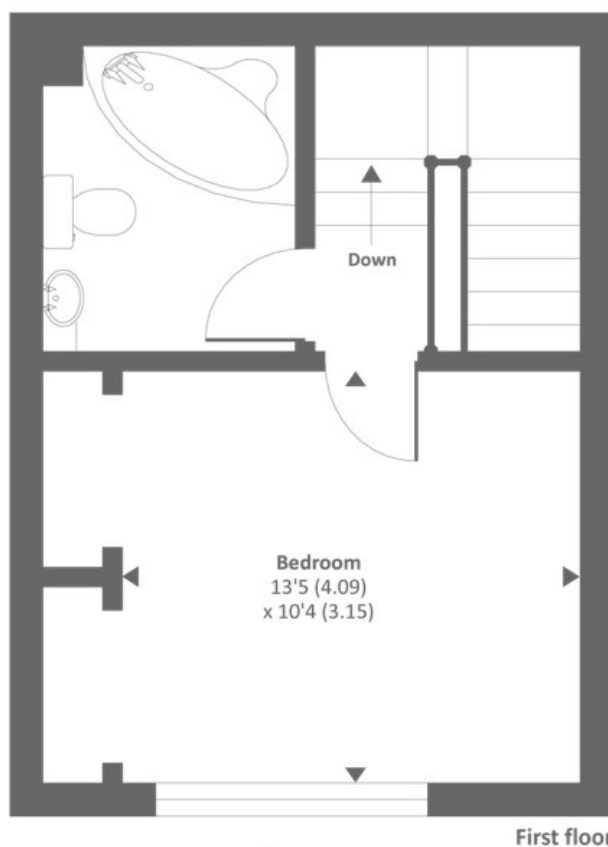
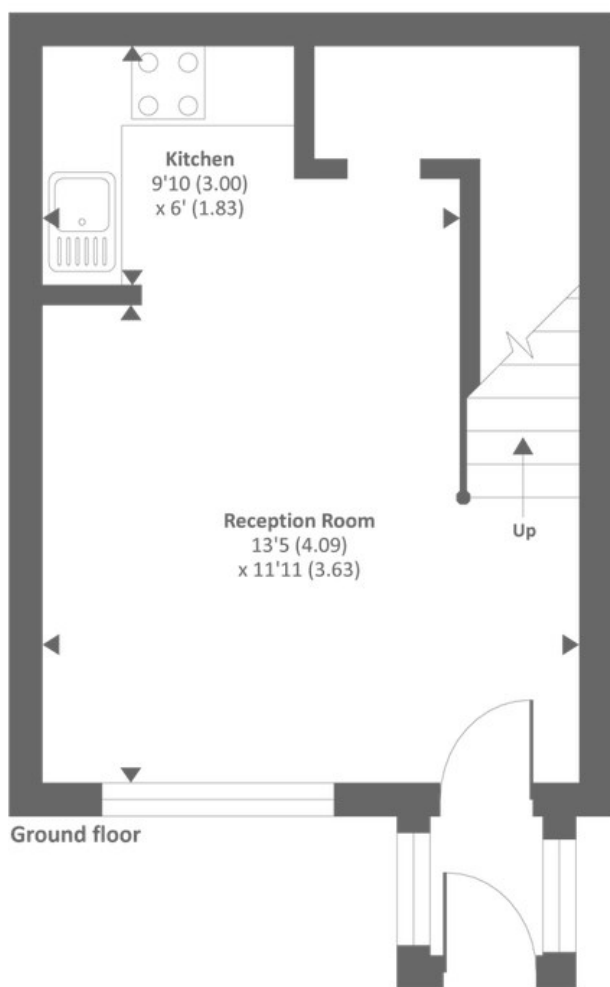
RyeView Homes are pleased to present to the Sales market this charming one bedroom terraced house, conveniently located in a sought-after location, within a short distance from High Wycombe town centre and just a few minutes drive from M40 via Junction 4.

The property is situated in the West of High Wycombe, providing easy access to local amenities and transport links. The property comprises in brief: entrance porch, open-plan kitchen and diner, good sized double bedroom with fitted wardrobes, and three piece suite bathroom.

Ideal first-time purchase or buy to let investment.

The accommodation in further detail comprises:



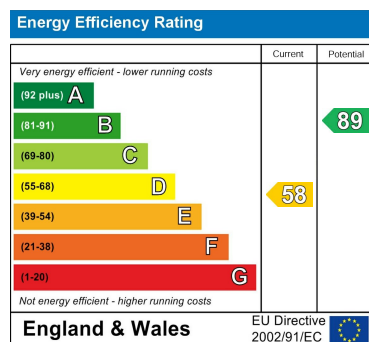


Approx. gross internal floor area 511 SQFT / 47.5 SQM

Council Tax Band

C

Energy Performance Graph



Call us on

01494 510099

info@ryevviewhomes.com

ryevviewhomes.com

Agents Note: Whilst every care has been taken to prepare these particulars, they are for guidance purposes only. All measurements are approximate and are for general guidance purposes only and whilst every care has been taken to ensure their accuracy, they should not be relied upon and potential buyers are advised to recheck the measurements.